



**INSTALLATION INSTRUCTIONS**  
**07- 08 Jeep Wrangler 4-Door Side Bars**  
**3-inch round Black, Textured Black, Stainless**  
**4-inch Oval, Textured Black, Stainless**  
**4-inch Round Stainless**

**PARTS LIST**

(1) Driver Side Bar	(2) Front Brackets (Driver/Pass)
(1) Passenger Side Bar	(2) Rear Bracket (Driver/Pass)
(2) Middle Bracket (Driver/Pass)	(12) M6 lock nuts
(12) M6X25mm Button Allen Head Cap Bolts	(2) M8X35mm Hex Head Bolts
(24) M6X22mmX3mm thick Flat Washers	(14) M8 Lock Washers
(12) M8X25mm Hex Head Bolts	(12) M8X15mmX3mm Thick Flat Washers
(2) M8X25mmX3mm Thick Flat Washers	(6) M10 Nut Plates
(6) M10X35mm Hex Head Bolts	(6) M10X30mmX3mm thick Flat Washers
(6) M10 Lock Washers	

**PROCEDURE:**

- 1. REMOVE CONTENTS FROM BOX. VERIFY ALL PARTS ARE PRESENT. READ INSTRUCTIONS CAREFULLY.**
- Locate, remove and set aside the front, middle and rear bar mounts, and the hardware kit.

**Left Side – Driver’s Side Brackets**

RR-A or RR-L (Rear Driver’s side – left )  
 CTR-A or CTR-L (Center Driver’s side - left)  
 FR-A or FR-L (Front Driver’s side - left)

**Right Side – Passenger’s Side Brackets**

RR-B or RR-R (Rear Passenger’s side - right)  
 CRT-B or CRT-R (Center Passenger’s side – right)  
 FR-B or FR-R (Front Passenger’s side – right)

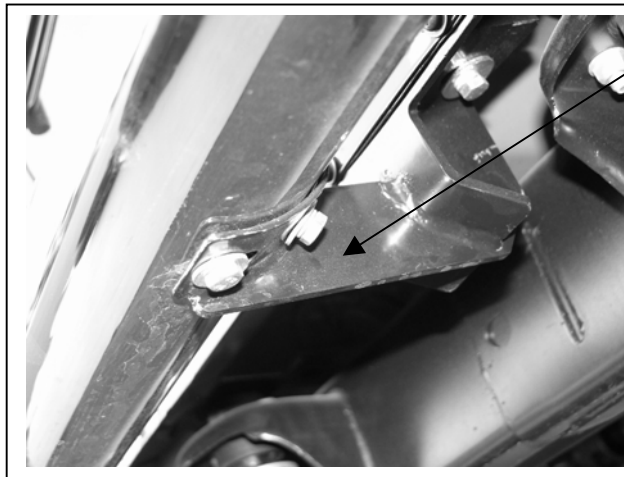
- Install the front, middle, and rear nut plate into the frame openings (Fig 1) with the nut facing up. Note: Later model JK’s may not need the rear nut plate installed. An 8mm bolt will be used to screw into existing body mounted location..
- Attach the front, middle and rear bar mount on the driver side with one of the 12MM bolts, lock washer and washer. (Fig 2). See note above regarding rear mounting plate. 8MM bolt may be needed. **Do not tighten at this time.**

Fig 1.

Note how nut should be installed facing up. Photo shows nut facing down



Fig 2



5. Install the black round 6MM Allen head bolts and 6MM Flat Washer through the front of rocker panel lip (Fig 3) for all three mounting plates. Secure with a 6MM Flat Washer, 6MM Lock Washer, and a 6MM Nylock Nut. **Do Not Tighten At This Time**
6. Place the bar on the brackets and install the 8MM bolts and lock washers (Fig 4)
7. Align the bar and tighten all the fasteners (Fig 5) and torque to 30ft-lbs
8. Repeat operation on other side.



Fig 3

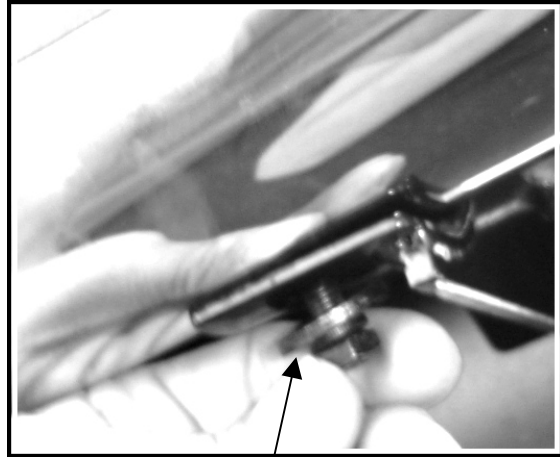


Fig 4



Fig 5