



## 6-LUG MODELS

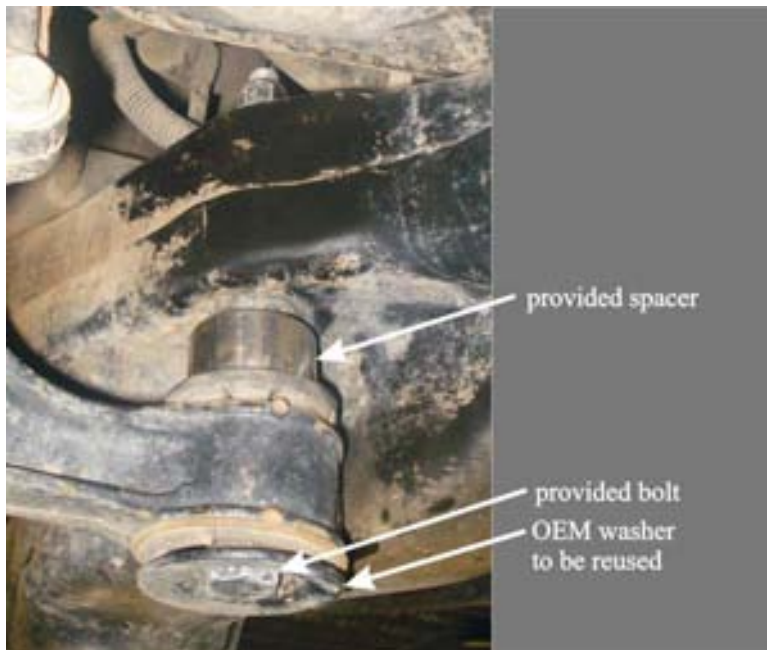
### TOYOTA DIFFERENTIAL-DROP INSTALLATION INSTRUCTIONS

#### For 4x4 models only:

1. Using a 12mm socket, remove the skid plate and save the OEM hardware.



2. Using a 14mm socket and wrench remove the differential bolts one side at a time. The differential is heavy, be sure to support it.



3. Install the provided spacers between the differential mounts and cross member. Use the OEM washers, the provided bolts and nuts to secure the spacers. Torque to factory specs.
4. To replace the skid plate use the OEM bolts on the forward end and replace the rear bolts with the provided 8mm bolts.

## 5-LUG MODELS

### Front Differential Spacers

1. Position a floor jack under the front differential. Raise the pad so that it is touching the diff.
2. Remove the factory 19mm differential mounting nuts and bolts. The OEM washers will be reused.
3. Install the 1" spacers between the differential supports and the front cross-member. Install the new bolts with factory washers and the new nuts and washers. Torque to factory specs.



### Skid Plate Spacers

Using the hardware provided, install the M8 bolt, washer, skid plate, and 1/2" tall spacer into the back three skid plate mounting points. Then mount the two OEM front bolts. Torque to factory specs.

